



ANTF DEFAULT APPS CONSOLE

A BRIEF UNDERSTANDING

NEBULATM
AN ANTF VIRTUAL OPERATING ENVIROMENT

WHAT IS THE DEFAULT APPS CONSOLE?

ANTF Introduced MyPins as a handy way to access particular applications that people use most often

- Web browser
- Music player
- Video player
- Security apps
- Webcam apps
- Disc or other utility

We wanted to allow the user to define those things so they can use them
In addition to some first/3rd party apps already provided in the system

You can define paths for the applications and their icons

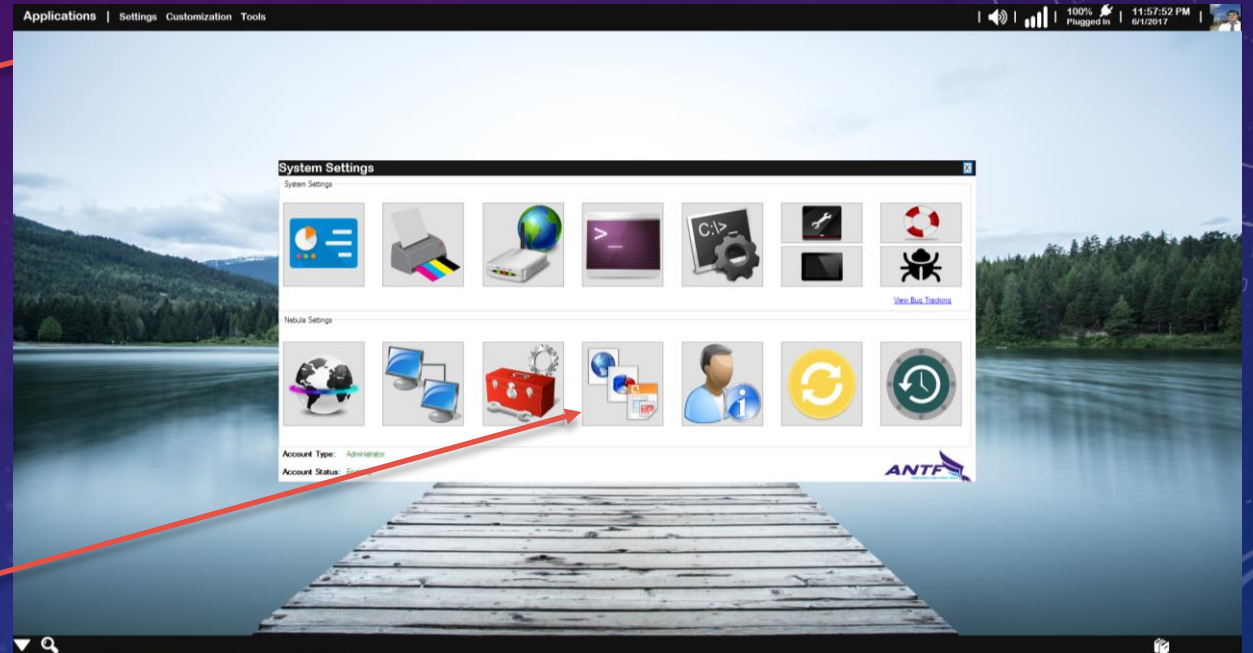


*See Guide for MyPins for further Information



HOW TO ACCESS APP DEFAULTS

Step1: Click on Settings



Step2: Click on App Defaults

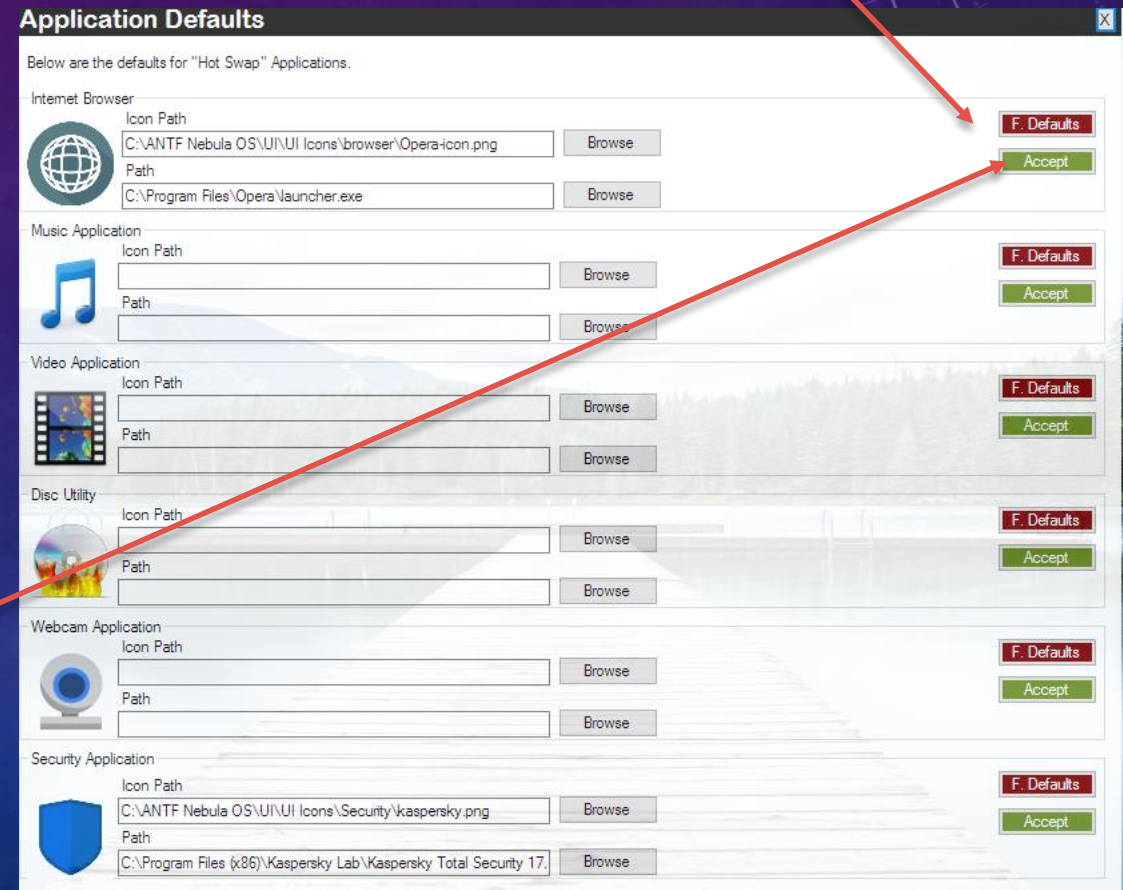
THE APP DEFAULTS MENU

Each App is Separated For Easy Handling

Here you can choose the application's executable path and an icon for it

Saves information to files in user account and makes them available in MyPins

Blanks fields and erases MyPin from system



Note: The browser fields have text in them to show example, and opening this menu automatically closes MyPins to prevent errors

ADDITIONAL INFORMATION

Icons are not actually .ico files, rather its asking for a standard .jpeg/jpg/bmp/png/gif image

When browsing for icons , if you cannot find any, if you navigate to the following folder you will find an array of options (Do Not delete items from these system folders as the system may fail to operate)

"C:\ANTF Nebula OS\UI\UI Icons"

If you desire other images/icons, [click here](#)

